



# BROADMEADOW

COMMUNITY NATIONAL SCHOOL  
IN THE HEART OF SWORDS

Principal  
Miss Jennifer Robinson

Telephone: 085-804-9106  
Email: [broadmeadowcns@ddletb.ie](mailto:broadmeadowcns@ddletb.ie)

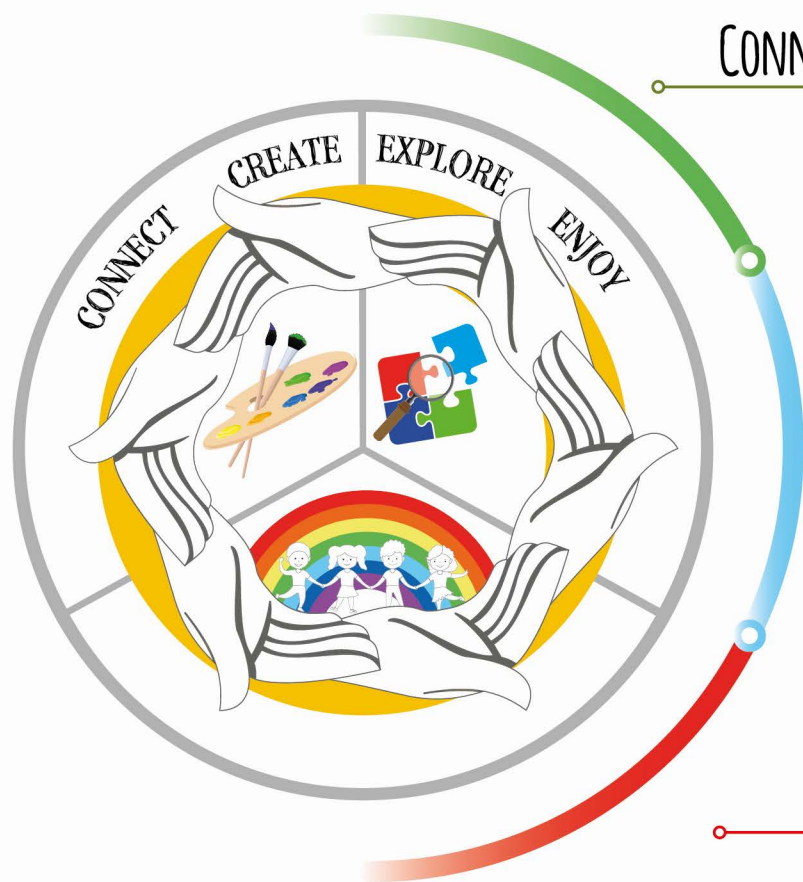


**etbi**

Education and Training  
Boards Ireland  
*Boird Oideachais agus  
Oiliúna Éireann*

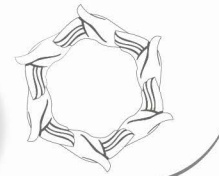
Broadmeadow Community National School, Rathbeale Road, Swords, Co. Dublin.

# OUR SCHOOL CREST & MOTTO



CONNECT

01



CONNECT

Connect together to achieve more! Connections through our families, school and wider community strengthen us all.

CREATE

02



CREATE

Create and learn when connections are made. Links open the door to creativity.

EXPLORE

03



EXPLORE

Once connected you are able to explore, find out new things and reach new learning goals.

ENJOY

04



ENJOY

When we connect, explore and create we achieve overall enjoyment.

# PRINCIPAL'S WELCOME

---

Dear Parents/Guardians,

Firstly, as the school Principal I would like to say a **Thank You** for choosing **Broadmeadow Community National School** as the school of choice for your child. As a school we would like to say that we are looking forward to working in partnership with you now and into the future. Community National Schools were established in 2008 as the Irish State's response to increased diversity in Irish society. The first schools were established in Dublin 15, but have now spread to over 20 around the country in Meath, Dublin, Cork, Wicklow, Kildare, Louth, Wexford and Kerry. The Community National Schools are under the patronage of the local Education and Training Boards which have an excellent reputation in providing post-primary education and further education opportunities. As a new and developing school, you are now part of the exciting journey ahead!



Our vision for Broadmeadow Community National School is to create an environment which is calm and safe, in which each member of staff, each student and each member of the community reaches their **full potential**. Strong links and partnerships between all of these will be the key to ensuring that all children receive the best possible opportunities to develop socially, academically and emotionally. We hope you will be part of our vision too!

Our school motto of '**Connect, Create, Explore, Enjoy**' fully describes the active and creative approach that we will take in educating the children while also acknowledging the important part parents and community figures play in the creation of meaningful connections and exploration of other people's perspectives.

The school aims to offer an education which is grounded in research and innovative in nature. We aim to provide the highest quality education in each of the subject areas while being mindful of the well-being and emotional development of the child.

Broadmeadow CNS also aims to be a creative school, one which integrates and promotes the arts as a method of learning and a method of expression for the children. It is envisaged that the children will experience artistic, musical, dramatic and design elements during the implementation of the Primary School Curriculum. The school will foster values of **Respect, Empathy, Fairness, Integrity, Accountability, Trust** and **Collaboration**.

We look forward to working in partnership with you.

Yours faithfully,  
**Jennifer Robinson,**  
Principal.







# WHAT IS A COMMUNITY NATIONAL SCHOOL?

---

**Community National Schools (CNS) were established in 2008 as the Irish State's response to increased diversity in Irish society. The first schools were established in Dublin 15, but have now spread to over 20 around the country in Meath, Dublin, Cork, Wicklow, Kildare, Louth, Wexford and Kerry.**

The Community National Schools are under the patronage of the local Education and Training Boards which have an excellent reputation in providing post-primary education and further education opportunities.

Community National Schools are child-centred, multi-denominational, publicly-accountable schools which strive to provide high quality education for every child. They give equal opportunities to all children in the communities they serve. All practice in the CNS are guided by the four cornerstones of **Excellence in Education, Equality Based, Community Focused** and **Multi-Denominational**.

More information about the CNS model can be found at [www.cns.ie](http://www.cns.ie)

Broadmeadow CNS aims to offer an education which is grounded in research and innovative in nature. We aim to provide the highest quality education in each of the subject areas while being mindful of the well-being and emotional development of the child.

It is envisaged that the children will experience artistic, musical, dramatic and design elements during the implementation of the Primary School Curriculum. The school will foster values of **Respect, Empathy, Fairness, Integrity, Accountability, Trust and Collaboration**.



# OUR SCHOOL VALUES

---



COMMUNITY  
NATIONAL SCHOOL -  
RECOGNITION  
RESPECT &  
CELEBRATION OF  
ALL CHILDREN  
EQUALLY



# OUR HISTORY

---

**Broadmeadow CNS opened its doors in August 2020 for the very first in-take of Junior Infants. Our school has been established in response to the increase in population within the Swords catchment area. The school comes under the Patronage of the Minister for Education and Skills. Our Patron is the Dublin & Dún Laoghaire Education and Training Board.**

The rationale behind the establishment of the Community National Schools and this new form of Patronage is to reflect the changing shape of Irish society. This new model of school Patronage ensures that each member of the school community is treated with dignity and respect and that all religious beliefs, values and cultures are recognised and celebrated.

Broadmeadow Community National School will:

- Be open to children of all faiths and none.
- Be inter-denominational in character.
- Operate through an ethos of inclusiveness and respect for all beliefs, both religious and non-religious.
- Operate in accordance with the rules for primary schools as set out by the Department of Education and Skills.

We started our journey at our temporary location on the site of Swords Community College within modern, well equipped Portacabins.

At Broadmeadow CNS we have a very clear vision for all children to be happy, safe, achieve and learn which is clearly shown in our motto 'Connect, Create, Explore and Enjoy'.

In order to achieve this we have some very clear objectives:

- To ensure that pupils, parents and staff feel happy, safe and secure within our school and that the individual feels valued and respected.
- To develop a sense of community with the involvement of staff, pupils, parents and the community surrounding us.
- To provide a high standard of education in a school environment that recognises diverse beliefs, cultural belief and ethnicity for all.
- To provide a learning environment where the pupil can aspire to and achieve their full potential, with the best support.
- To help the children develop a strong sense of self-confidence, self-belief and self-respect which will support them in respecting and valuing others.





# COMPLETING OUR ENROLMENT FORM

Applications are permitted for children aged **4 years** of age, or greater. However, your child must be 4 years of age **before** August of the year of entry. An application for admission must be fully completed and sent to the school by December of the preceding year for consideration. The school will then make an offer of a place for your child. As places are limited, and to facilitate waiting lists, we ask that you formally accept or decline this letter of acceptance.

Further information in relation to admissions can be found on our school website - [www.broadmeadowcns.ie](http://www.broadmeadowcns.ie)  
If you do have any queries or questions in relation to admission then please do contact the school or email [broadmeadowcns@ddletb.ie](mailto:broadmeadowcns@ddletb.ie) for further information.



## CHILD PROTECTION POLICY

The Protection of the Child is of central and utmost importance at Broadmeadow CNS. We have detailed **Child Protection Policies** derived from our tried and tested Community National School policy. These are available online at our school governing body's website ([www.cns.ie](http://www.cns.ie)), and can also be accessed locally at the School Secretary's Office.

## BEFORE & AFTER SCHOOL CLUBS

Broadmeadow CNS are developing a creative before and after school programme for all of our children. We believe it is helpful that children and families have this additional support and opportunity to make friends, develop new skills and further their learning. Our before and after school timetable will include a breakfast club and additional opportunities to take part in sports, dance and music beyond that taught within school day.

For up to date information take a look at the '**Before/After Schools**' tab found on our website.

# PREPARING YOUR CHILD FOR PRIMARY SCHOOL

There is a lot to learn when your child starts school! A selection of skills that your child will be developing during their first few weeks at school are outlined here. As an extra helping hand please support and encourage your child to practise these skills at home too, and feel free to speak to a member of staff if you have any questions or concerns.

## PERSONAL SKILLS

Before your child's start date for Junior Infants, there is huge benefit to be had from encouraging them to:

- Wash and dry their hands
  - Use the toilet
  - Use a tissue to blow and wipe their nose
  - Put on and fasten their coat
  - Put on and fasten their shoes (we encourage Velcro strapped shoes)
  - Put on and take off their school uniform
- This is really helpful when we starting doing PE lessons

## INDEPENDENCE AND SHARING

Support your child to:

- Take turns when playing simple games and share toys.
- Join in with games and activities with other people. Try having a friend round to your house to play – this is great for encouraging independence and developing confidence too

## READING AND WRITING

Support your child to:

- Recognise their name when written down
- Hold a pencil to make marks
- Practise writing their name



# YOUR CHILD'S SCHOOL JOURNEY IS ABOUT TO BEGIN!

Taking those early steps at home can make a material difference to how your child settles into their new Primary School environment. Where possible, we encourage parents and guardians to help smooth their child's journey to their new and exciting learning experience at Broadmeadow CNS.

## EATING AND DRINKING

Talk to your child about how to:

- Make healthy food choices at lunchtime
- Wash their hands for 20 seconds
- Use a knife, fork and spoon
- Successfully opening lunch packaging

**Parents / Guardians** - We encourage you to consider what is included in your child's school lunches and to try a variety of foods. Perhaps pack some lunches together with your child and explain the importance of portion size.

## NUMBER SKILLS

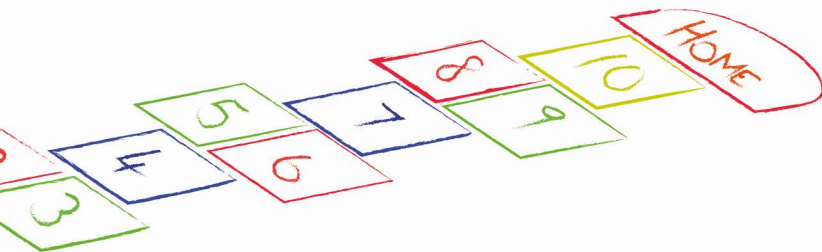
Support your child to:

- Count small groups of objects
- Practise counting to 5
- Sing number rhymes or songs

## SPEAKING AND LISTENING

Encourage your child to:

- Listen to stories, songs and rhymes and to join in with repeated words or phrases
- Ask and answer simple questions
- Ask a trusted grown-up for help when needed



# EXAMPLE OF OUR SCHOOL TIMETABLE (TAKEN FROM JUNIOR INFANTS)

	MONDAY	TUESDAY	WEDNESDAY	THURSDAY	FRIDAY
8.40-8.45	SETTLING IN TIME				
8.45-9.00	NEWS / ORAL LANGUAGE	NAME WRITING / LETTER & NUMBER FORMATION		CELEBRATION ASSEMBLY	
9.00-9.20			PHONICS		
9.20-9.25			ROLLA		
9.25-9.40			BIG BOOK		
9.40-10.00			AISTEAR / ENGLISH / DRAMA		
10.00-10.10			MUSIC & RHYME		
10.10-10.25	SNACK & OUTDOOR BREAKTIME				
10.25-10.50			GAELGE		
10.50-11.00			MATHS / MENTAL MATHS		
11.00-11.20			AISTEAR / MATHS		
11.20-11.30		MUSIC & DANCE		SHOW & TELL	MUSIC & RHYME
11.30-12.10	AISTEAR / SESE	PE	AISTEAR / VISUAL ARTS	AISTEAR / SESE*	PE
12.10-12.45	LUNCHTIME - FRIENDSHIP & CONFLICT TIME				
12.45-1.15	GMGY****	AISTEAR / SESE	AISTEAR*** / SPHE**	AISTEAR / VISUAL ARTS	VISUAL ARTS
1.15-1.20	SONGS / GOODNESS ME, GOODNESS YOU!				

\*SESE = Social, Environmental and Scientific Education; \*\*SPHE = Social, Personal and Health Education; \*\*\*Aistear: the Irish word for journey, is Early Childhood Curriculum Framework that celebrates early childhood as a time of being, of enjoying and learning from experiences as they unfold. \*\*\*\*Goodness Me, Goodness You!



# THE TEACHING DAY

Our teaching day for students begins with drop off to the school yard, where a parent or family member will supervise the children as they wait for the school day to begin. Once the children are welcomed into school at 8:40am, we recognise the benefits of a settling period of five minutes, as they get themselves prepared for the school day. Broadmeadow CNS follows curriculum for Ireland's primary schools as determined by the Minister for Education and Skills, who is advised by the National Council for Curriculum and Assessment.

Lessons begin at 8:45 am and continue until 10:10 am, when the children will pause for the shorter of the two school day breaks. During this break-time we encourage children to play in their "**Friendship Groups**", comprising 3 to 4 classmates where they can learn to interact through play with a smaller group. The smaller group dynamic allows your child to gradually experience play with progressively larger groups of children.

Our second break in the school day is from 12:10pm to 12:45pm, a time we use for general play, but also at times when it is needed, we use this time for short exercises in restorative practice. This is a positive methodology used to resolve any issues that might be evolving in the class dynamic. It is especially useful when applied to emerging friendships and conflicts that might exist.

On a Friday we schedule our **Celebration Assembly**, which is a positive expression of the past week at school. Your child's class artwork, their collective behaviour awards and achievements of the week are celebrated. This is a highly successful and incentivising experience for all, and one all our staff and children look forward to.



There will be opportunities for you to attend this assembly across the school year. We ask you to keep an eye out for your invitation to join us in our celebrations!

# A SCHOOL OF RESTORATIVE PRACTICE

---

**A restorative classroom is a place where relationships matter. The better the relationships in a classroom between teacher and students, and between the students themselves, the better teachers can teach; the better the students can learn and the fewer challenges and conflicts there will be. Broadmeadow CNS endeavours to be a Restorative School. Restorative practice is based on the principle that the best way to help someone who has done wrong is to give them the opportunity to put things right.**

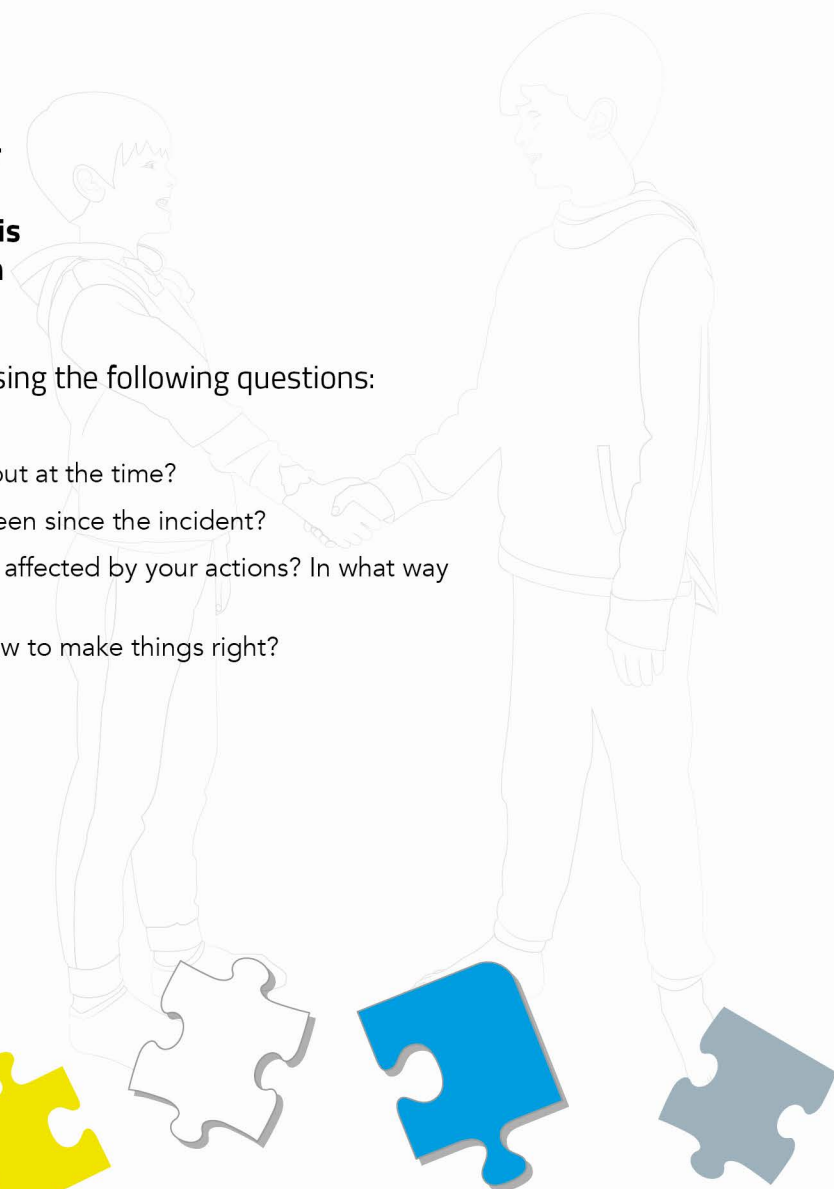
At its most basic, restorative practices improve the quality of relationships we have. Using this approach can both avoid and minimise conflict, while also help us to manage it better when it does arise.

More specifically, restorative practices have been found to reduce school exclusions, improve staff sickness rates, reduce tensions in the workplace, and give people greater confidence in managing difficult situations.

Broadmeadow CNS has developed the *Code of Positive Behaviour* around the use of restorative practices. Staff will use conversation and conferencing to deal with conflict.

Conversations are framed using the following questions:

- What happened?
- What were you thinking about at the time?
- What have your thoughts been since the incident?
- Who do you think has been affected by your actions? In what way were they affected?
- What do you need to do now to make things right?





# WORKING TOWARDS BECOMING AN ACTIVE SCHOOL

At Broadmeadow CNS we strive to achieve and maintain our Active School initiative goals from the moment we open our doors. The Active School Flag (ASF) is a Department of Education and Skills initiative, supported by Healthy Ireland, which aims to get more schools, more active, more often. This flag, which is a great source of pride, is awarded to schools that strive to achieve a physically educated and physically active school community.

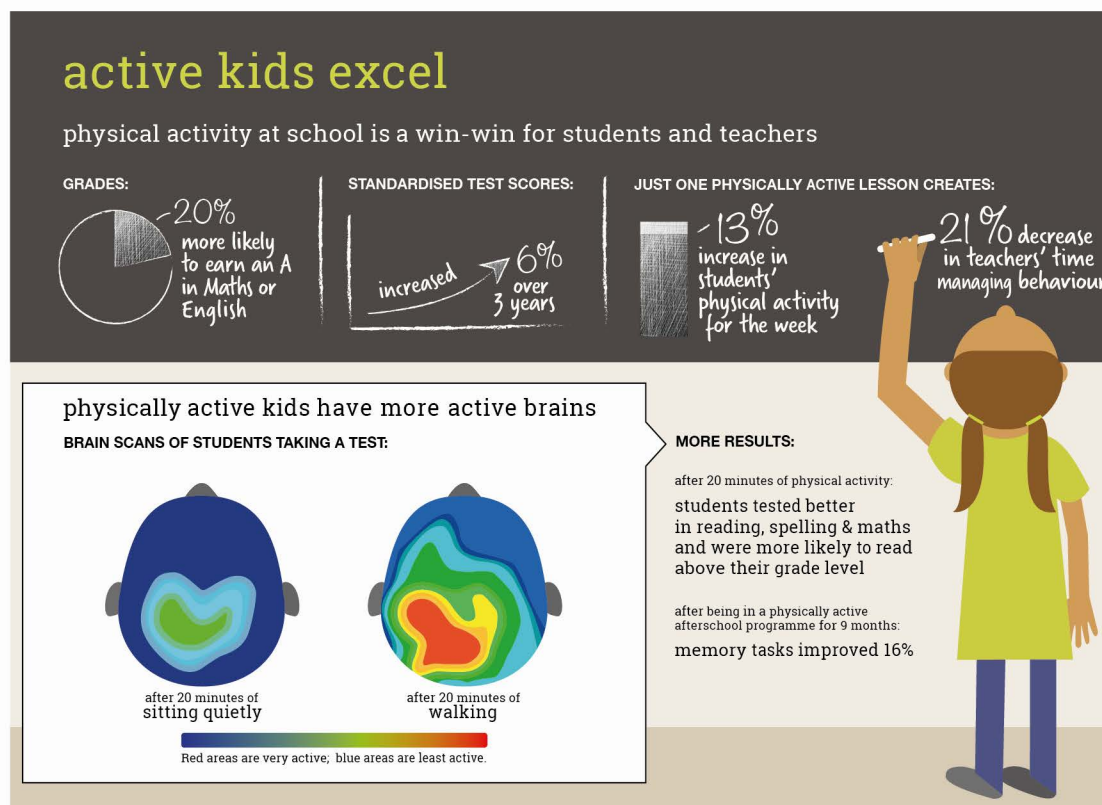


The Active School Flag initiative forms part of the National Physical Activity Plan and the Healthy Ireland vision to encourage our children to maximise their physical and mental health. Our school is working to create an environment to realise the full potential of our children, where well-being is valued and supported at every level and is a communal responsibility.

Studies show that approximately 80% of Irish children are not sufficiently active (Children's Sport Participation and Physical Activity Study, 2010). The ASF programme provides schools with a template to help the whole school become more active. It achieves this within the confines of the school day, with an emphasis on **FUN** and **INCLUSION**.

As we embark on this most important goal, at Broadmeadow CNS we welcome suggestions from our School Community. Ideas for new activities to complement our Active School Flag initiative are always encouraged.

Please submit your suggestions via email to [broadmeadowcns@ddletb.ie](mailto:broadmeadowcns@ddletb.ie)



# HOW CAN PARENTS BECOME INVOLVED IN OUR SCHOOL?

At Broadmeadow Community National School we are committed to working closely with our parents, families and the wider community. We are fully aware that a school cannot function without this ongoing support, and therefore we take pride in our **Parent School Partnership**.

## PARENT TEACHER ASSOCIATION (PTA)

Parents and family members will be asked to volunteer a little or a lot to our school PTA; where they will work alongside the school staff and children in order to support the development of our school. All of the work involved will ensure that the experience your child gains is the best one. Such events may include fundraising events, supporting the development of the classroom or grounds, baking cakes, attending meetings to share ideas and much more.

If you would like to be part of this community and share your thoughts and have your view then please email your interest to [broadmeadowcns@ddletb.ie](mailto:broadmeadowcns@ddletb.ie)

## BOARD OF MANAGEMENT (BOM)

The Board of Management manages the school with the support of the school Principal on behalf of the patron and is accountable to the Patron and the Minister. The Board is heavily involved in the production and implementation of all school policies, it's ethos and overall running of the school.

An interim Board of Management is in place for the beginning of the each academic year, and a new Board of Management will be constituted during the academic year.

To become a parent representative on the Board of Management we will advertise for expression of interest and a poll will be placed to families within the school in order to choose the representative. The length of service we ask is 2-3 years, but this can be changed if required.

The parent Board of Management member will be asked to attend approximately 3-5 meetings per school year to discuss matters that involve our families and children. We ask for this representative to be the voice of all of our families. The role on the Board of Management is without pressure and is often found to be a very enjoyable part to play in your child's education and journey.



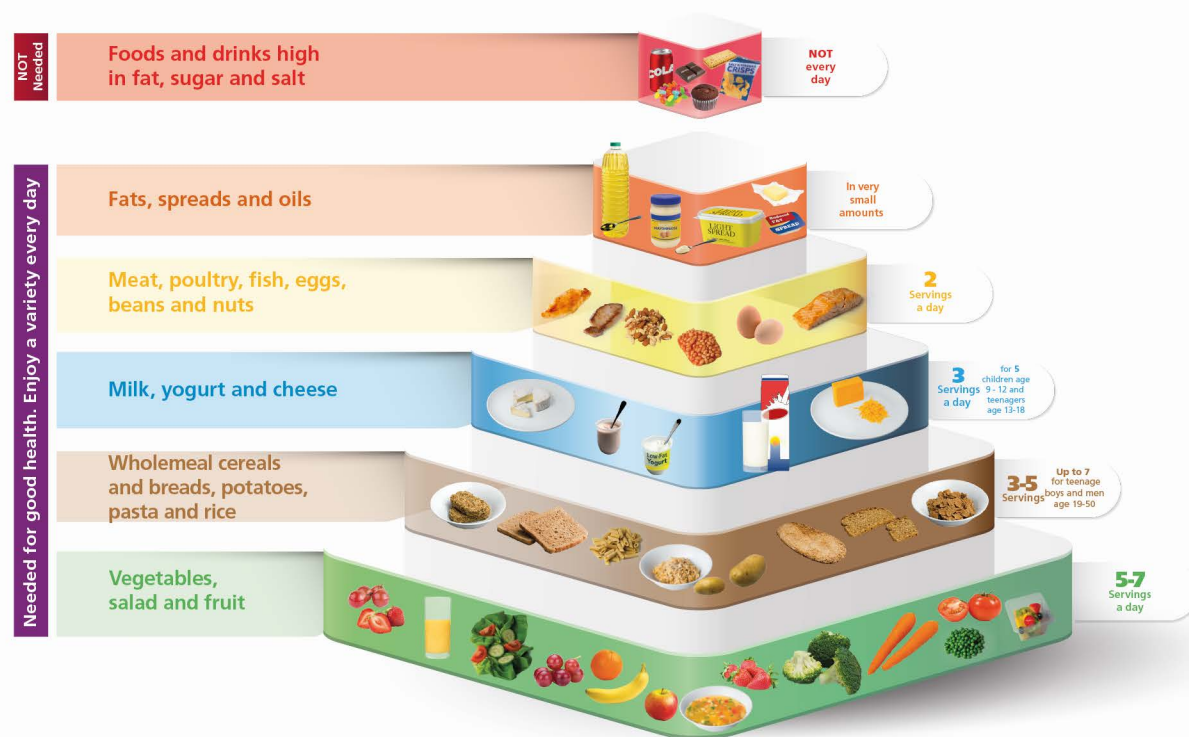
# LUNCHTIME

Our Healthy Eating Policy outlines how the school supports healthy eating practices through the promotion of healthy lunches and healthy snacks and by other means throughout the school day. The Social, Personal and Health Education (SPHE) Guidelines aim to promote the personal development and well-being of the student to provide a foundation for healthy living in all its aspects. Broadmeadow CNS is committed to facilitating the children's development of skills and attitudes to allow them to make informed decisions about their food intake. Our whole school approach, involving teachers, parents and children is designed to ensure that healthy eating messages are a part of every aspect of school life. The children will continue to receive consistent messages regarding healthy eating both at home and at school.

Our School lunchtime is typically 10 minutes before the children's outdoor playtime. We do not permit any children to bring food outside, so all food should be consumed in advance of their yard playtime.

At Broadmeadow CNS we try to foster a healthy approach to food, discouraging lunches with a high sugar content; promoting a balanced healthy lifestyle instead. Portion size appropriate to our pupils' age group is very important for the healthy development of both mind and body. In keeping with an environmentally aware education, we do ask that any uneaten food is brought home in the children's lunch boxes; this allows for appropriate recycling and also allows parents and guardians to understand what their child has eaten during their school day.

To gradually introduce your child to the notion of playing with larger groups pupils in Junior and Senior Infants are encouraged to play only within their "Friendship Groups" (4-6 others) during the short break in the morning. This practice allows them to develop play-skills within a smaller group, and then progress with confidence to larger groups.



<sup>†</sup>Adapted from healthyireland.ie

# HEALTHY EATING AT SCHOOL

**Broadmeadow CNS is committed to facilitating our children's development of skills and attitudes to allow them to make informed decisions about their food choices. We adopt a whole school approach, involving teachers, parents and children to ensure that healthy eating messages are a part of every aspect of school life. Throughout their schooling our students will receive consistent messages to help them make healthy eating choices, both at home and at school.**

## Suggestions for your child's school lunch:

- Breads – whole-grain breads, rolls, bagels, wraps, soda bread or pitta.
- Bread substitutes – oatcakes, plain rice cakes, pancakes or crackers.
- Fillings – cheese, tuna, hummus, cold meats, pate, egg, lettuce, spinach, cucumber, tomato, onion, peppers, coleslaw, salad, or banana.
- Fruit – apple, oranges, banana, grapes, pear, plum, peach, apricots, melon, grapefruit, pineapple, strawberries, raspberries, mango, tomatoes, blackberries or blueberries. Remember to peel and/or cut fruit and vegetables into bite-sized pieces for younger children.
- Raw vegetables – sweet corn, peppers, carrot sticks, celery sticks, broccoli, cabbage or cucumber, salad.
- Dairy items - cheese pots, cheese, yogurts etc.

There are however some items we would prefer our children did not include in their daily lunches. These restricted items include:

- Cereal bars.
- Processed food items such as sausage rolls, pizza, pies etc.
- Fizzy drinks, flavoured water, cordial (we promote water and milk).
- Nuts (including peanut butter).
- Chewing gum.
- Chocolate (including chocolate spread).
- Sweets & winders.
- Crisps & popcorn.
- Biscuits, cakes, muffins, tray bakes (including homemade).





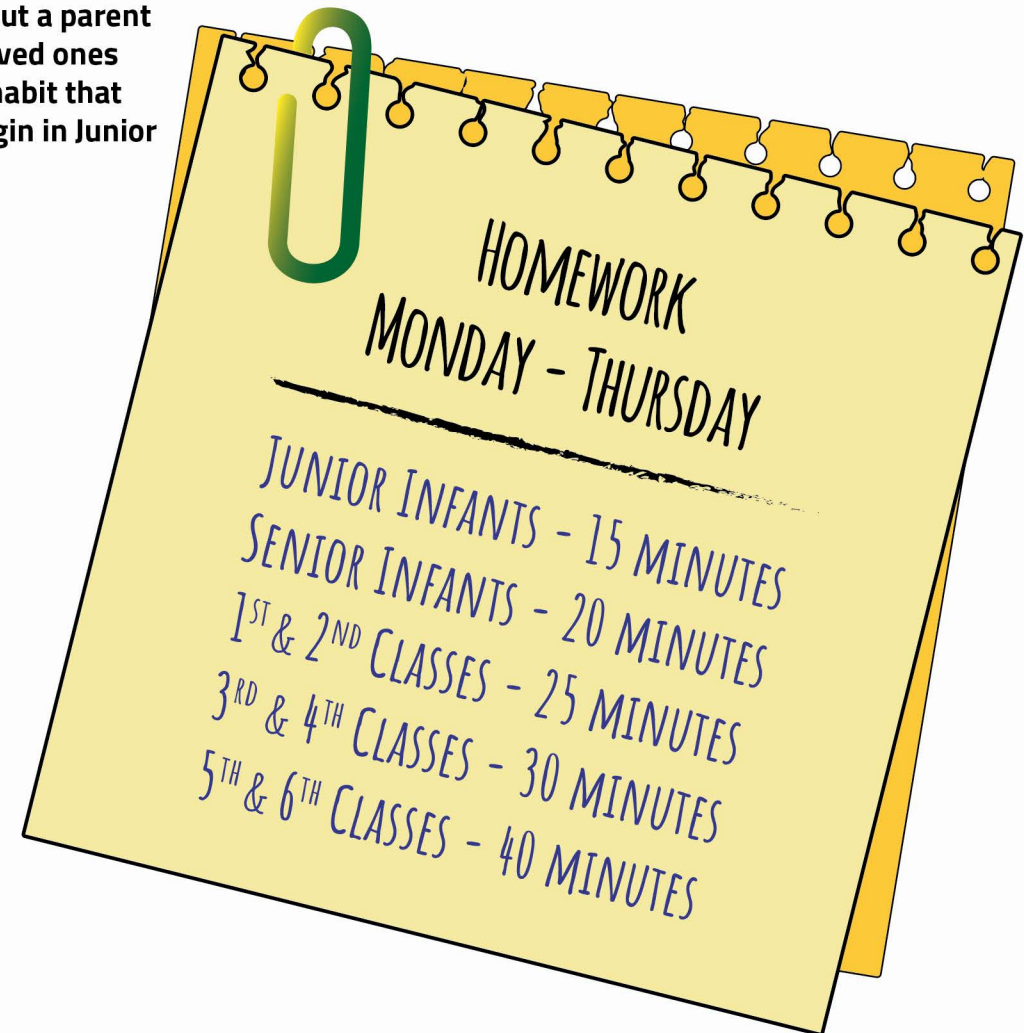
# OUR HOMEWORK POLICY

Daily homework helps children to crystallise the information that has been taught during their school day. At Broadmeadow CNS we recognise the essential input a parent or guardian can provide during homework time with their children. Having loved ones participate in their homework helps our pupils to form a healthy homework habit that will benefit them for the rest of their school lives. Our home assignments begin in Junior Infants, with a brief 15 minutes of engaging homework.

We understand the importance of striking the correct balance in daily learning. The relationship between learning during the school day and a brief period of homework is key to reinforce the educational process.

It is envisaged that your child should not spend excessive time on planned homework assignments. Homework will be assigned by your child's class teacher in a manner appropriate to the children's abilities.

The children will also be given the opportunity to take part in active homework, research and fun practical tasks. Throughout the year children will have the opportunity to earn a homework pass as part of our rewards and sanctions policy.



# EDUCATIONAL VISITS & EXTRA-CURRICULAR ACTIVITIES

---

We know and understand that children thrive within the school and also when out exploring within the Community. For this reason your child will be given many opportunities to explore the local area, and a minimum of one school tour per school year.

We are proud to celebrate diversity and inclusion across the school year. Each year we will take part in a number of extra-curricular activities as a school and as individual classes. Some of these will mark the events of religious calendars such as Christmas, Diwali, and Ramadan, others will include time to appreciate our loved ones, as in the case of Grandparents Day, whilst many will be to celebrate talents and interests such as Active School Week, Science Week and Maths Week.

## ABSENCES FROM SCHOOL

---

All absences must be reported to the school office and a signed note provided upon your child's return to school. All details are stored in our Aladdin system for record purposes and in line with GDPR.

## OUR SCHOOL CALENDAR

---

Our school calendar will be published on the school website for all to see. Please ensure that you take a look and if you need a paper copy then do ask the School Office.





# MEDICINES AND ILLNESSES

---

At Broadmeadow CNS we want children to be comfortable and to enjoy themselves at school. If there is a requirement to administer medication to any pupil, our preference is to have Parents or Guardians complete this important task. However, we understand this might not always be possible; in such cases are happy to facilitate reasonable requests where possible and where safe to do so. However, we do require Parents or Guardians to complete and return the **Medical Condition and Administration of Medicines** form prior to any action being taken by our School. Please feel free to contact the School Office, or send an email directly, and we can arrange a meeting to fully understand your child's needs.

The Aims and Objectives of the Medicine Policy can be summarised as follows;

- Minimise health risks to children and staff on the school premises.
- Provide a framework within which medicines may be administered in cases of emergency or in instances where regularised administration has been agreed with parents/guardians.

A copy of this policy can be found at [broadmeadowcns.ie](http://broadmeadowcns.ie)

# PUPILS WITH FOOD ALLERGIES

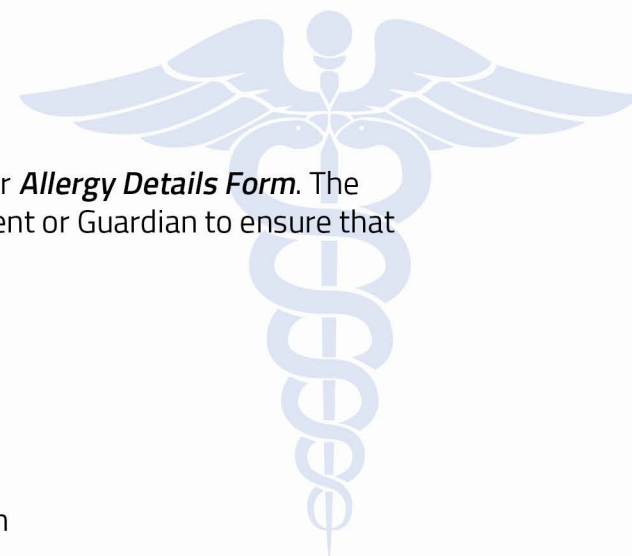
---

If your child has a food allergy, then we do ask you to make this known to the school and to complete our **Allergy Details Form**. The school will then support your child and their safety within this area. It is the full responsibility of the Parent or Guardian to ensure that all details are kept up to date.

# MEDICAL & DENTAL APPOINTMENTS DURING SCHOOL HOURS

---

We do ask, where possible, for all appointments to be made outside of the already short school day. If an appointment has to be made during the school day, a copy of the appointment letter will be required.



# OUR SCHOOL UNIFORM

Our school uniform is available from School Wear House based in Ballymount, Dublin 24. The Broadmeadow school uniform is required for all students, and children should wear their full school uniform on the first day of each new school term. On days when Physical education (PE) lessons are held, children should wear their tracksuit bottoms, tracksuit tops and either black or white runners. Your child's teacher will notify parents and guardians of the specific weekday when PE is held.

Our supplier is located in

Unit D7,  
Ballymount Cross Industrial Estate,  
Ballymount,  
Dublin 24.

Telephone:

01-4604371

Opening hours:

Monday - Friday 10:00am – 5:00pm  
Saturdays 10:00am – 4:00pm

If you prefer, an online ordering process is also available.  
Our supplier can be found online at [schoolwearhouse.ie](http://schoolwearhouse.ie)

For all uniform queries please email our uniform supplier  
directly via their dedicated helpline – [info@schoolwearhouse.ie](mailto:info@schoolwearhouse.ie)

## School Uniform

School Jumper  
Bow Tie (girls)  
Elastic Tie (boys)  
School Shirt / Blouse - White  
School Trousers - Grey  
School Skirt  
Black School Shoes  
Black, White or Navy socks / tights

## Physical Education

Tracksuit Top  
Polo Shirt - White  
Tracksuit Bottoms  
School Shorts  
Black or White Runners





# YOUR DATA AND PRIVACY : DATA PROTECTION & OUR CHILD'S INFORMATION

**The General Data Protection Regulation (GDPR) came into force on the 25th May 2018, and affects all personal data held by government agencies and state schools. What does GDPR mean for Irish Primary schools, how are Broadmeadow CNS engaging and implementing GDPR?**

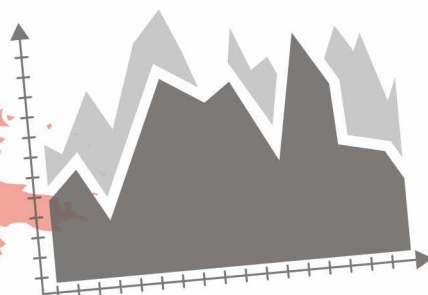
At Broadmeadow CNS we take the storing and sharing of data very seriously and ensure that all regulations and legislation are in place and followed to protect you in the best way possible.

The Data Protection Act, 1988, and the Data Protection (Amendment) Act, 2003, safeguard the privacy rights of individuals with regard to personal data i.e. data relating to them which is held on computer files, or in manual files which are structured or searchable by reference to individuals.

This Data Protection Policy applies to the personal data held by the Board of Management of Broadmeadow CNS which is protected by the Data Protection Acts 1988 to 2018 and the EU General Data Personal Regulation (GDPR).

This policy applies to all school staff, the Board of Management, parents/guardians, students and others (including prospective or potential students and their parents/guardians and applicants for staff positions within the school) insofar as the measures under the policy relate to them. Data will be stored securely, so that confidential information is protected in compliance with relevant legislation.

Our policy can be found at [broadmeadowcns.ie](http://broadmeadowcns.ie)



# SCHOOL COMMUNICATION CHANNELS

At Broadmeadow CNS our main forms of communication are through use of SMS text message, verbal messaging, email and via our website. Additional means of communication of your children's achievements throughout the year will be published on our Facebook and Twitter pages.

Please take a look at our Communication Policy on our school website.

Internet Safety and your child's protection is of the highest importance to us. Our Internet and Social Media Policy document should be read and considered by all Parents and Guardians. Your child will be automatically **opted out** of this policy until the required policy consent document is completed and returned to Broadmeadow CNS.

[Webwise.ie](http://www.webwise.ie) has a wealth of resources and information for parents and children on staying safe and secure online. This website also contains information on the different types of technology and terminology that are currently in use. The Government's excellent Be Safe Online campaign highlights ways to help you and your children to stay safe online. For more, visit [www.gov.ie/en/campaigns/be-safe-online](http://www.gov.ie/en/campaigns/be-safe-online)

## Communication Policy

We are conscious of the environmental impact paper based communications from schools can have. Where possible we have opted to use an SMS text messages system to send messages to parents and guardians. Please note, this is an out-going notification service only, and does not accept replies.

## WhatsApp Group Policy

We understand bulk communications between parents of pupils has become a feature of school life in Ireland. We would ask that if such channels are used, that parents would consult our guidance on the use of such tools.

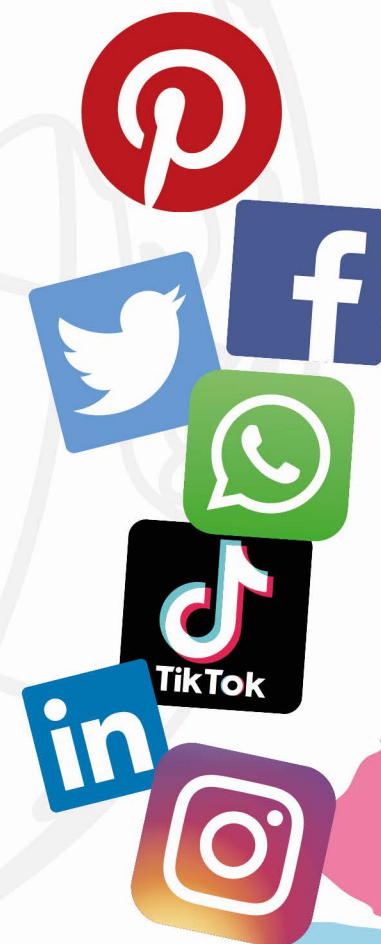
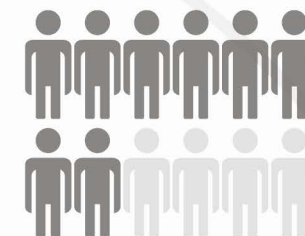
## Social Invitations

Distribution of invitations to birthday parties or other social gatherings is not facilitated by the school, and we would ask that any such invitations be privately distributed outside of our school premises.

## Our Cashless School

Our school maintains a strict cashless policy. Payments, as they arise, will be facilitated via our MIT School Payments System. For safety and accountability we maintain a strict policy as a cashless school.

You can enrol for the CNS MIT payment system using this link [broadmeadowcns.ie/make-a-payment/](http://broadmeadowcns.ie/make-a-payment/)





# BROADMEADOW IS A GREEN SCHOOL

Care and respect for the environment is very important to us a Broadmeadow CNS, and in this respect we enjoy the full support of the Board of Management and the greater parent body. Over the next number of academic terms we intend to further develop and integrate a variety of Green Initiatives into our daily School Life. Therefore, we will be working towards our Green Flag as soon as we open our doors.

## These initiatives include:

**Energy awareness** - We have created an "Energy Monitor" roll in each classroom, where children are given small responsibilities to minimise our school's carbon foot print. The week-long role includes a variety of tasks; from turning off light switches, to closing doors and alerting the teacher to open windows when leaving the classroom.

**Recycling** - We promote care for the environment by encouraging all pupils to recognise their opportunities to recycle different kinds of waste.

**Grow Your Own (GYO)** - Planting and care of simple vegetables and flowers. Our children love to learn about, and witness growth from seed to flowering plant in our highly engaging GYO programme.

Composting of organic lunch waste where possible and return-to-home of plastics for recycling.

Broadmeadow places additional emphasis in our CNS teaching curriculum on the importance of renewable energy, sustainability and social awareness of valued green initiatives.



# HOW DO WE GET TO BROADMEADOW CNS?

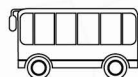
**Broadmeadow CNS currently occupies a modern building within the campus of Swords Community College, Rathbeale Road, Swords, Co. Dublin. As part of the Government's committed support for the Community National School programme, it is envisaged that Broadmeadow CNS will relocate to the heart of Swords to our own building in the near future.**



Our current location is a short cycle from Swords village centre via the R125 Rathbeale Road.



We have secure parking for your child's bicycle or scooter.



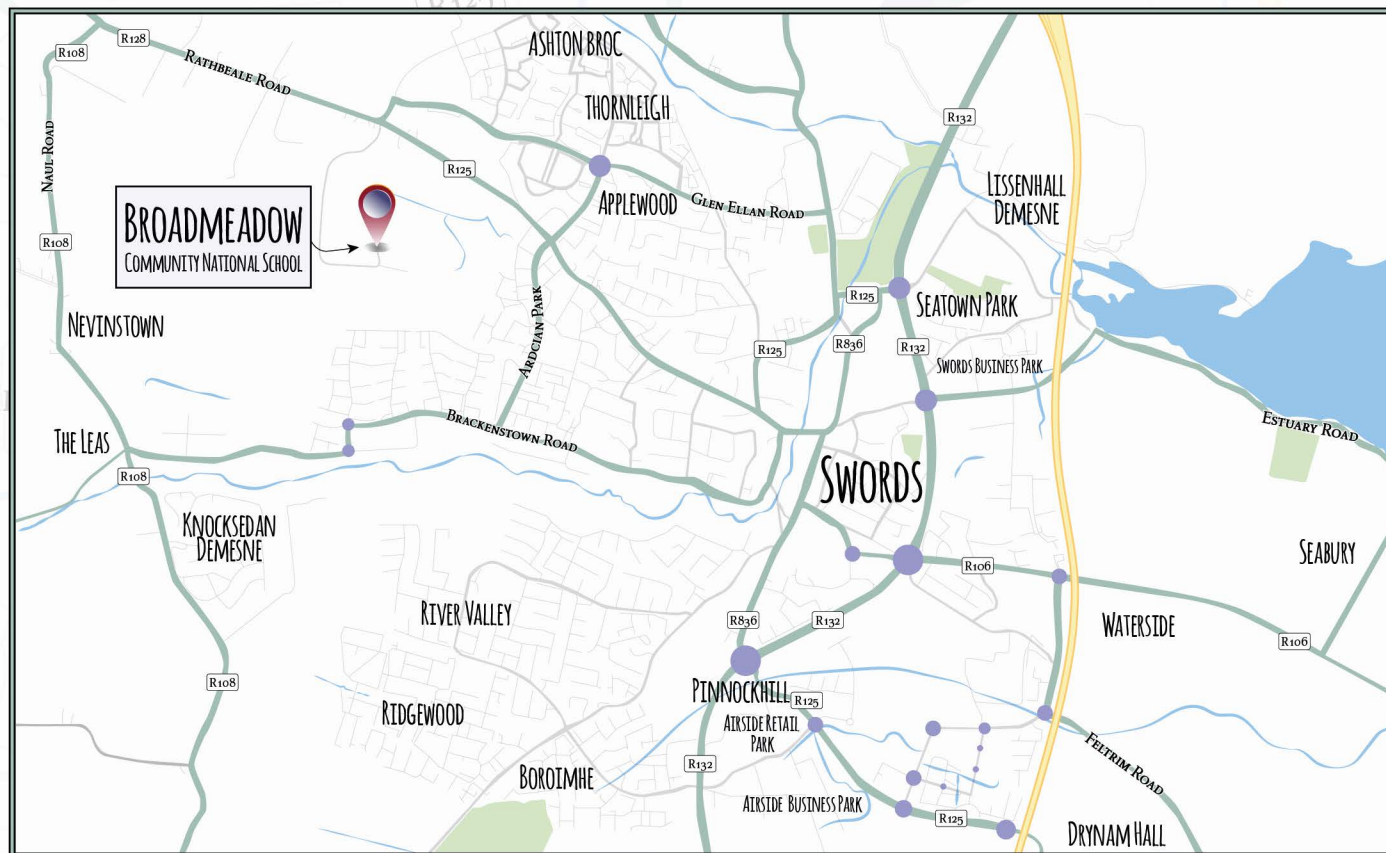
We are well served by the number 41b bus route, timetables are freely available.



For those driving our school's GPS coordinates are :  
53.466937,-6.250688 or  
53°28'01.0"N 6°15'02.5"W



Alternatively point your smart phone camera at our QR code for directions!





# THE CNS "GOODNESS ME, GOODNESS YOU!" PROGRAMME

**Goodness Me, Goodness You! (GMGY) is the patron's programme for Community National Schools and caters for children of all beliefs; religious and non-religious. As such it aims to support, promote and underpin the multi-denominational characteristic spirit of our school. It is the policy of the CNS model to respect, celebrate and recognise diversity in all areas of human life. The programme was founded on the idea that children of differing beliefs share one very important common experience; that of childhood.**

The GMGY guiding principles are described as the core values that inform and guide the teaching and learning of GMGY in Community National Schools. They are intended to be lived out by all members of the school community:

- To seek to nurture the development of the whole child, and value all dimensions of the child's family and community life, including beliefs and religions.
- To acknowledge parents as the primary educators of their children, and families and communities as those responsible for passing on traditions, values and beliefs.
- To respect and celebrate the different beliefs of children as central to the characteristic spirit of our school.

By exploring all children's ordinary experiences GMGY opens multiple possibilities of interpretation, but crucially does not give priority to any one significance or view. Children themselves attribute this significance out of their family and religious community background and its tradition.

The GMGY curriculum is a practical expression of the characteristic spirit of the CNS and is lived out through the four areas of:

- My Stories
- We are a CNS
- Thinking Time
- Beliefs and Religions

If you would like more information on the **Goodness Me, Goodness You!** programme please visit our Community National Schools website at this address:

[www.cns.ie/goodness-me-goodness-you-new/](http://www.cns.ie/goodness-me-goodness-you-new/)

**LET'S GO WITH GMGY!**

**Let's go with GMGY!**

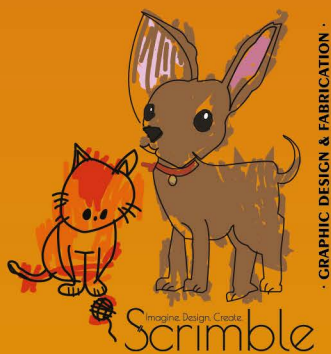
Let's go with GMGY!



Point your smart phone  
camera here to  
visit us online

[www.broadmeadowcns.ie](http://www.broadmeadowcns.ie)

Telephone: 085-804-9106  
 Email: [broadmeadowcns@ddletb.ie](mailto:broadmeadowcns@ddletb.ie)



GRAPHIC DESIGN & FABRICATION

 [scrimble@outlook.ie](mailto:scrimble@outlook.ie)  
 +353-87-798-3191  
 [www.scrimble.ie](http://www.scrimble.ie)



School Prospectus and Crest created by  
 Scrimble Graphic Design & Fabrication.

